

NFHS VOLLEYBALL REFEREE SIGNALS: TEXAS HIGH SCHOOL FOCUS

Official Signals and Visual Cues for UIL Matches

OBJECTIVES

- Understand the NFHS official volleyball referee signals
- Identify signals through visual and verbal cues
- Recognize their importance in match control

WHY REFEREE SIGNALS MATTER

- • Quick, consistent communication
- • Maintains game flow and fairness
- • Required for all TASO/UIIL matches

WHISTLE AND START/STOP SIGNALS

- Begin Serve:
Arm extended/bring hand to opposite shoulder

- Point/Loss of Rally:
Arm up, palm open to rally winning side

- Replay:
Two thumbs up



COMMON FAULT SIGNALS PT. I

1. Illegal Alignment/
Improper Server



- Illegal Alignment: Circular finger motion

2. Line Fault



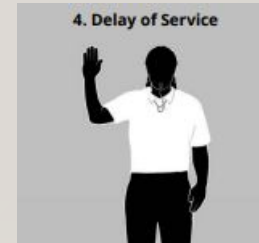
- Line Violation:
Point to line

3. Illegal Hit



- Illegal Hit:
Palm flat, lift motion

4. Delay of Service



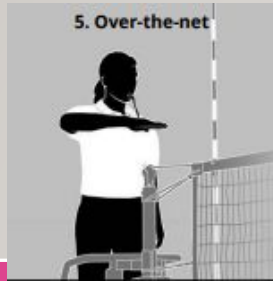
- Delay of Serve:
Hold up 5 fingers

6. Net Fault or Net Serve



- Net Violation:
Hand touches net

COMMON FAULT SIGNALS PT. 2



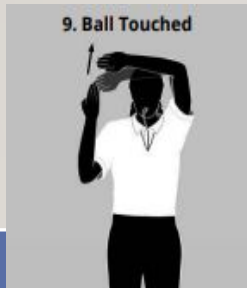
- Over-the-Net:
Arm extended over
plane



- Back-Row Attack:
Downward slicing
motion



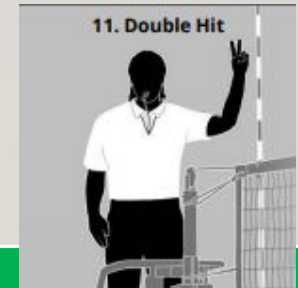
- Illegal Block:
Two hands above
head



- Ball Touched:
Fingertips brush palm



- Four Hits:
Show four fingers



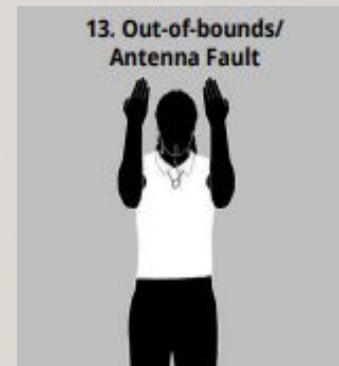
- Double Hit:
Show two fingers

BOUNDARY AND BALL CALLS

- Ball In:
Point to floor

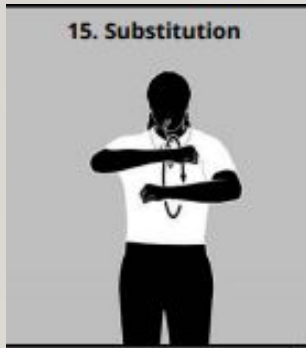


- Ball Out:
Arms
outstretched

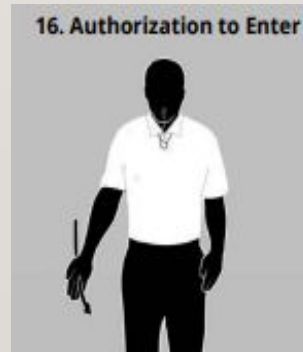


ADMINISTRATIVE SIGNALS

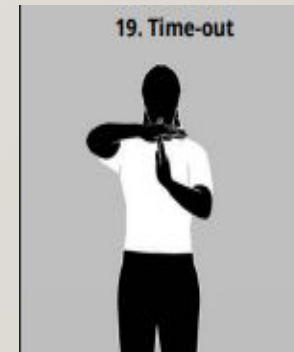
- Substitution:
Circular motion
with hands



- Authorization to
Enter:
Arm straight/palm
up (push motion)



- Time-Out:
T-shape with hands
(on side of team
making call)



ADMINISTRATIVE SIGNALS

- Unnecessary Delay:
Card on back of hand



- End of Set
Arms crossed on chest



- Change Courts:
Right arm in front/left arm behind



REFEREE 2 (R2) SUPPORT

- Check line-ups

- Stay on net (Don't watch the ball. Don't watch the server.)

- Use of discreet signals to R1

- Communication with R1 via mirrored gestures

- Communication with table

- Calling time outs

SIGNALING PLAYER NUMBERS

SIGNALING PLAYER NUMBERS

Notes: (1) ----- means first show the top signal, pause, then show the bottom signal. (2): signals are shown from the giver's perspective.

0	1	2	3	4	5	6	7	8	9
0 and 1 - 5: Signal with single hand on the side of the fault									
10	11	12	13	14	15	16	17	18	19
Use the hand on the side of the fault									
20	21	22	23	24	25	26	27	28	29
30 - 39, 40 - 49, 50 - 59									
Like 20 - 29, except using 3 , 4 , or 5 for the tens digit on the right hand. For example, 41 is .									
60	61	62	63	64	65	66	67	68	69
70 - 79, 80 - 89, 90 - 99									
Like 60 - 69, except using 7 , 8 , or 9 for the tens digits. For example, 91 is followed by .									

KEY POINTS

THUMB TUCK ON ALL
SIGNALS



GOOD MECHANICS ALL
OF THE TIME



FINGERS TOGETHER



STRAIGHT ARMS/90'S/45'S



R2'S-DO NOT WATCH SERVER
-DO NOT FOLLOW BALL





- NFHS Signal Chart



- TASO Volleyball Resources



- FWMVB Website



- Practice tips

REVIEW & RESOURCES



Q&A AND WRAP-UP

- Questions?
- Get involved with your local chapter!